



Information deemed reliable but not guaranteed.

Excellent location

Literally above the red line Metro (best of all -- avoid rain and snow by accessing the metro via the condo garage)

Only steps to Whole Foods, Starbucks, restaurants, new Aquatic Center, and entertainment

Minutes to Bethesda and Georgetown

State-of-the-art luxury building

24-hour front desk and concierge

Fitness room featuring cardio (with TVs), free weights, and nautilus

Resident lounge (includes free wireless Internet)

Two courtyards

High-end finishes

Hardwood Floors

Granite Counters

Stainless Steel Appliances

Smart Dimmers

ELFA custom shelving in all closets

List Price: \$474,639
Condo Fee: \$433.69
Taxes: \$3,680 (2011)

And more

Super-tall 9 foot ceilings (unique to 6th floor)

Lots of natural light plus spectacular sunset views through wall of windows

Large den (undisputedly the biggest at Cityline) with closet; easily can accommodate multiple functions such as office and guest room.

Kitchen with open floor plan and dishwasher, refrigerator (including water and ice dispenser), range/oven, and microwave

Master bedroom with two closets

Huge designer bathroom with dual entry and large linen closet

Full-size washer and dryer

Pets allowed

Covered, reserved parking space included in list price



www.rochellerubin.com

202-316-5591

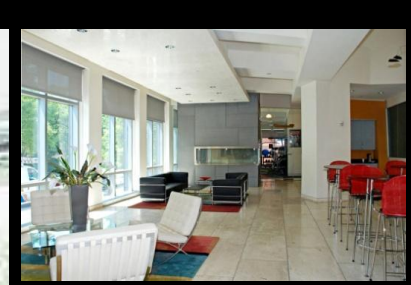


Stuart & Maury, Inc. Realtors

4833 Bethesda Ave. Ste 200
Bethesda, Maryland 20814
301-654-3200 301-656-6182



Licensed in D.C. and Maryland



CITYLINE AT TENLEY

4101 Albemarle St NW #639

Stunning and spacious (over 950 sq. ft.) one bedroom plus den (possible 2nd bedroom) condominium home flooded with natural light and boasting super-tall ceilings and wall of windows